



**John C. Wagner, PhD**  
 Director, Idaho National Laboratory  
[John.Wagner@inl.gov](mailto:John.Wagner@inl.gov)

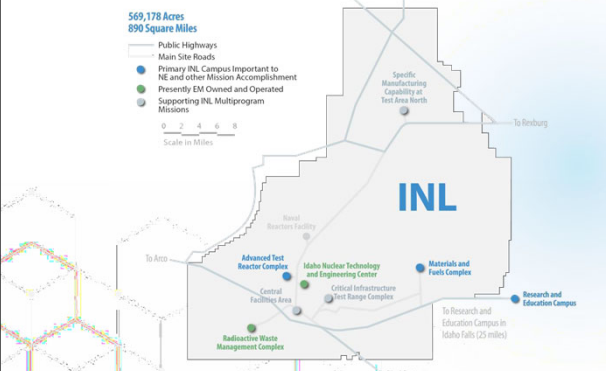
# Idaho National Laboratory

**January 7, 2022**  
 Idaho Legislature Economic Outlook and Revenue Assessment Committee



1

## INL site, infrastructure, and facilities enable energy and security R&D at scale



<b>569,178 Acres</b> 890 Square Miles	<b>320</b> DOE owned & operating buildings & trailers	<b>5,734</b> full-time equivalent employees
<b>40</b> Miles primary roads / 125 total	<b>35</b> Contractor leased operating buildings & trailers	<b>\$3.4B</b> Replacement plant value*
<b>17.5</b> Miles railroad for shipping nuclear fuel	<b>4</b> Operating reactors	<b>3.7M</b> Gross square feet*
<b>40.2</b> Acres – REC Campus	<b>12</b> Hazard Category II & III non-reactor facilities/activities	<b>3</b> Fire Stations
<b>7</b> Substations with interfaces to 2 power providers	<b>50</b> Radiological facilities/activities	<b>1</b> Landfill
<b>112</b> Miles high-voltage transmission lines		<b>1</b> Museum

\* All INL buildings and trailers

**IDAHO NATIONAL LABORATORY**

2

## Creating a secure, resilient, net-zero energy future

Nuclear Science & Technology

Advanced Test Reactor Complex II

Materials and Fuels Complex

Energy & Environment Science & Technology

National & Homeland Security Science & Technology

3

IDAHO NATIONAL LABORATORY

3

## Accelerating advanced reactor demonstration & deployment

2023

MARVEL 2023 | DOE

2024

LOTUS TEST BED 2024-2025 | NRIC

MCRE 2025 | SOUTHERN CO. & TERRAPOWER

2025

PROJECT PELE MICROREACTOR 2023-2024 | DOD

AURORA TBD | OKLO

2026

HERMES 2026 | KAIROS

2027

Xe-100 2027 | X-ENERGY

2028

NATRIUM REACTOR 2028 | TERRAPOWER & GE

2029

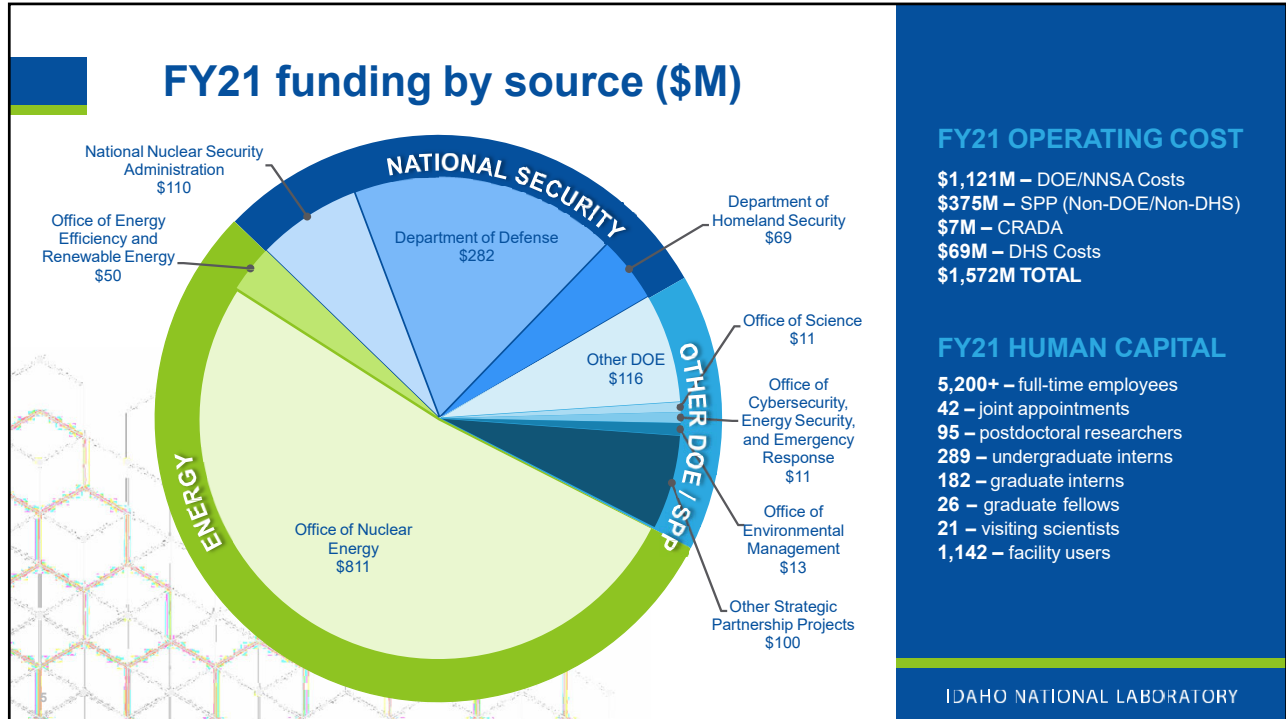
VOYGR 2029 | UAMPS & NuScale

2030

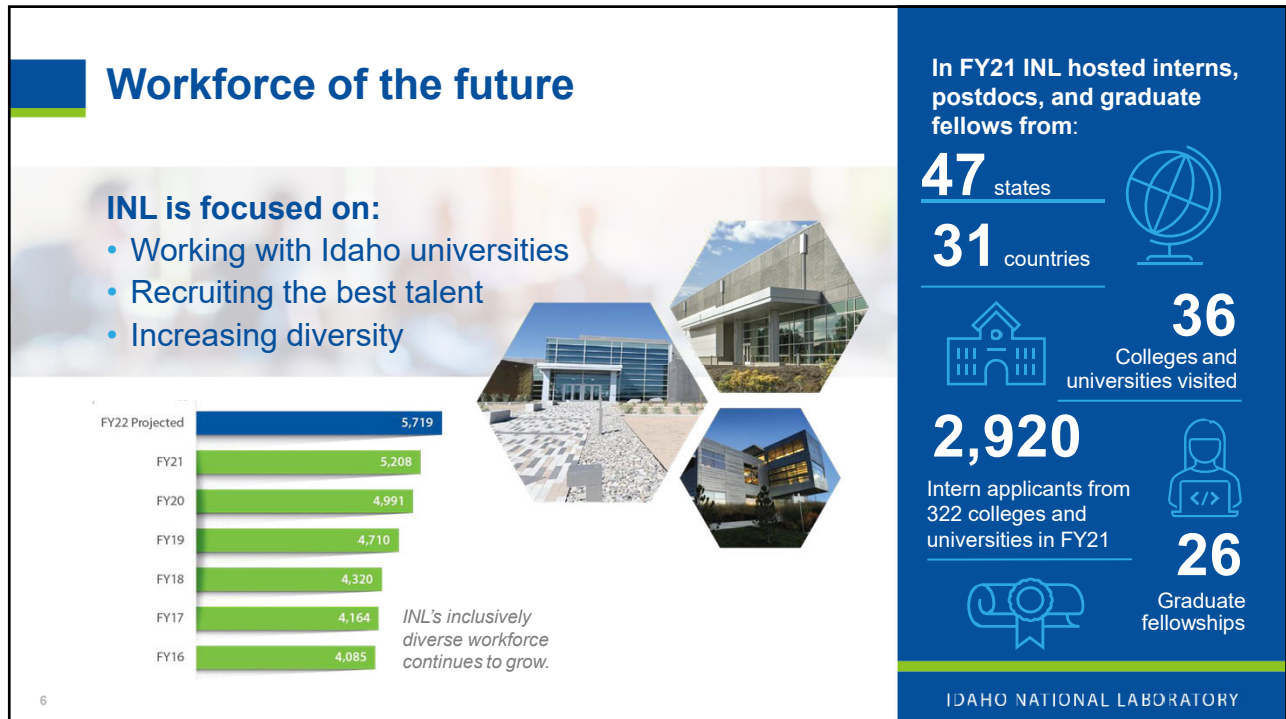
4

IDAHO NATIONAL LABORATORY

4



5



6

## INL's major cost drivers remain constant while business volume continues to grow

Fiscal Year	Business Volume (\$M)
FY22 Projected	\$1,724
FY21	\$1,572
FY20	\$1,492
FY19	\$1,349
FY18	\$1,089
FY17	\$1,001
FY16	\$1,034

*Business Volume (\$M)*

Mission

Geography

Infrastructure

**Fringe Benefits**  
 Medical • Retirement •  
 Personal Leave • Insurance/Taxes

IDAHO NATIONAL LABORATORY

7

## INL is a major contributor to Idaho's economy

INL's FY21 economic impact on the State of Idaho was **\$2.88B**

For every **1** INL job another **1.89** jobs are created in other industries.

INL is the **6th** largest private employer in Idaho

Nearly **10,000** other Idaho jobs depend on INL and its operations

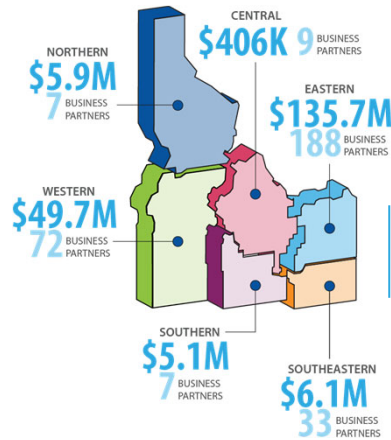
**\$203M** in subcontracts to Idahoan companies in FY21

Average Salary **\$108,142**

IDAHO NATIONAL LABORATORY

8

## INL partners locally to support our mission and benefit our region



FY21 INL spending with Idaho's businesses.

Acquisitions • Supplier diversity • Technology deployment



IDAHO NATIONAL LABORATORY

## INL is improving the quality of life in our community and region

### Building the future:

- Rural innovation efforts
- Small business and aspiring entrepreneurs
- Idaho Falls Innovation District
- Engaging the Shoshone-Bannock Tribes

### Giving Back:

- BEA's FY21 community giving program distributed \$169,000
- Staff pledged \$646,000 in the 2021 United Way campaign
- K-12 STEM education
- Community volunteerism



IDAHO NATIONAL LABORATORY

